

# MONTHLY MEMBERSHIP PROGRESS REPORT

District 201Q2

Results as of: 3/31/2020

GMT:

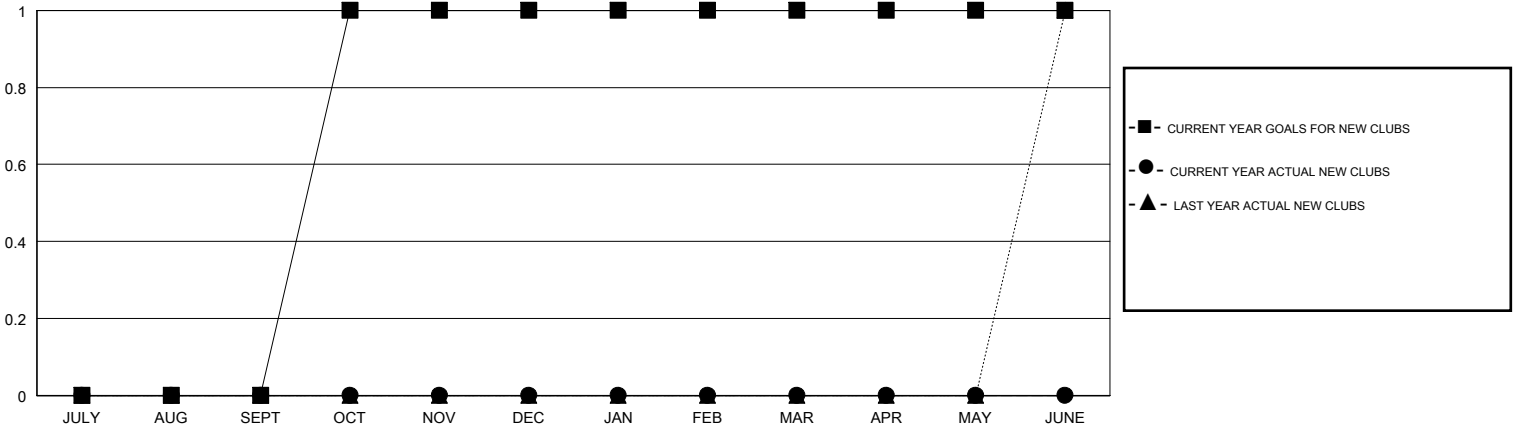
LOCATION AUSTRALIA

GMT CA

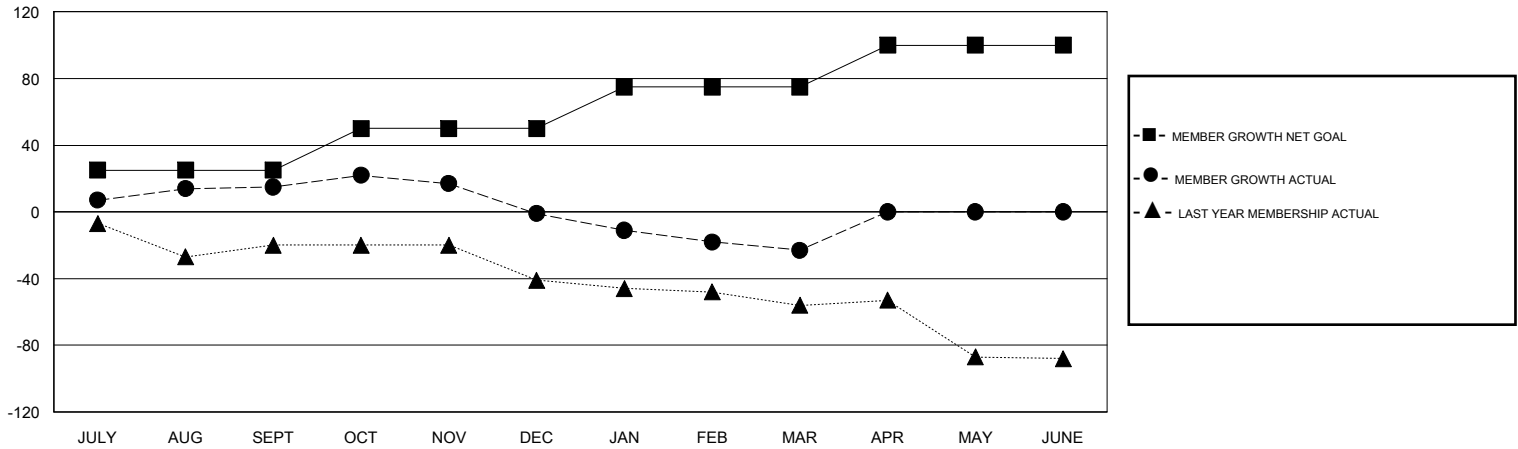
Clubs			
RESULTS FOR 2019-2020			
QUARTER	NEW CLUB GOAL	NEW CLUBS	DROPPED CLUBS
JULY/AUG/SEPT	0	0	0
OCT/NOV/DEC	1	0	1
JAN/FEB/MAR	0	0	0
APR/MAY/JUNE	0	0	0

Members			
RESULTS FOR 2019-2020			
QUARTER	MEMBER GROWTH NET GOAL	MEMBER GROWTH ACTUAL	DROPPED MEMBERS ACTUAL (including transfers)
JULY/AUG/SEPT	25	75	24
OCT/NOV/DEC	25	22	33
JAN/FEB/MAR	25	33	51
APR/MAY/JUNE	25	0	0

GOALS AND ACTUAL NEW CLUBS CUMULATIVE



GOALS AND ACTUAL MEMBERS CUMULATIVE



DROPPED CLUBS: 1	28 CLUBS OF 62 ADDED 1 OR MORE NEW MEMBERS	<b>GENDER DISTRIBUTION</b>
		MALE 655 (59.33%)
		FEMALE 449 (40.67%)
<b>DROPPED MEMBERS</b>	<a href="#">CLICK HERE FOR CUMULATIVE MEMBERSHIP DATA</a>	TOTAL FAMILY UNIT MEMBERS 159
DECEASED 12		FAMILY MEMBERS PAYING HALF DUES 80
CLUB CANCELLED 0		
OTHER 96		
<b>TOTAL 108</b>		